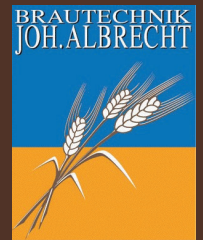


3 HI Glass Brewery

Standard Brewery
by Joh. Albrecht



Brewhouse

Annual output

Beer style

Control

Design

Energy supply

Power

Heating

Water

Installation area

Room size

Height

Floor load

Value [Unit]

300–800 [hl]

All beer styles – infusion/decoction

Manual, semi and fully automatic

Glass, stainless steel,

copper or individual combination

20 [kW]

Electrical 36 [kW]

2 [m³/h], ≥ 4 [bar]

40–80 [m²]

≥ 2,50 [m]

600 [kg/m²]

Additional modules for complete brewery

Our recommendation

Grist mill

Fermentation and Lagering

Tank type

Tank size

Insulation

CIP cleaning

Yeast handling

Hot/Cold water handling

Filter

Filling

Bottles

KEG

Value [Unit]

2 roller grist mill

Cylindro conical tank (CCT)

6 [hl]

Insulated or non-insulated

Manual – lost cleaning

Cooled yeast tubs

Lost or recuperation system

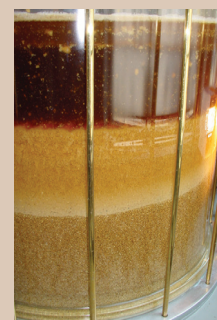
Cartridge filter or kieselgur filter

1 to 4 filling heads – manual

up to 250 bottles/h

Filling head – manual

10 KEG/h (semi-automatic)



JBT GmbH – Joh. Albrecht Brautechnik

Hanns-Schwindt-Str. 8

D-81829 München

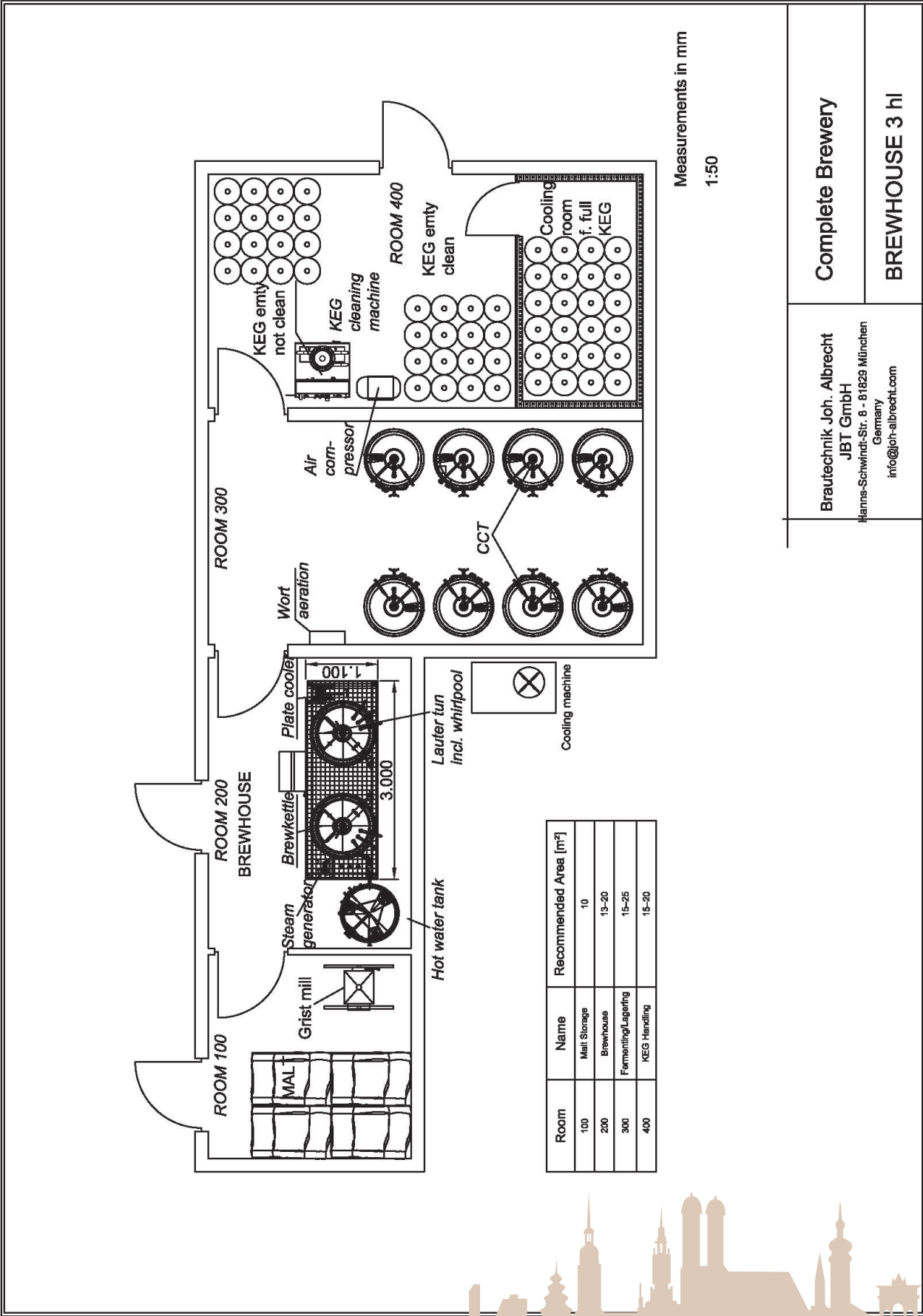
Telefon +49(0)89-34 41 10

E-Mail: info@joh-albrecht.com

Web: www.joh-albrecht.com

For more information: [JBT website](http://www.joh-albrecht.com)
or please contact us directly by Email.

Standard Drawing of 3 hl Module Brewery by Joh. Albrecht



| | |
|------------------|--------------------------------------------------------------------------------------------------------------------|
| Complete Brewery | Brautechnik Joh. Albrecht JBT GmbH Hanns-Schwindt-Str. 8 · 81829 München Germany info@joh-albrecht.com |
| BREWHOUSE 3 hl | |